



**India Meteorological Department
(Ministry of Earth Sciences)**

HOURLY UPDATE ON SEVERE CYCLONIC STORM "DANA"

BULLETIN NO. 6

DATE: 24-10-2024

TIME OF ISSUE: 2315 HRS IST

DATE/TIME (IST) OF OBSERVATION	BASED ON 24-10-2024 (2230 HRS IST)
LOCATION LATITUDE/LONGITUDE	THE SEVERE CYCLONIC STORM "DANA" (PRONOUNCED AS DANA) OVER NORTHWEST BAY OF BENGAL MOVED NORTH-NORTHWESTWARDS WITH A SPEED OF 13 KMPH DURING PAST 3 HOURS AND LAY CENTRED AT 2230 HRS IST OF TODAY, THE 24TH OCTOBER, OVER THE SAME REGION, NEAR LATITUDE 20.30° N AND LONGITUDE 87.20°E, ABOUT 50 KM EAST OF PARADIP (ODISHA), 60 KM SOUTH-SOUTHEAST OF DHAMARA (ODISHA) AND 170 KM SOUTH-SOUTHWEST OF SAGAR ISLAND (WEST BENGAL).
CURRENT INTENSITY WIND SPEED	SEVERE CYCLONIC STORM 105-115 KMPH GUSTING TO 125 KMPH
FORECAST	IT IS VERY LIKELY TO CONTINUE TO MOVE NORTH-NORTHWESTWARDS AND CROSS NORTH ODISHA-WEST BENGAL COASTS BETWEEN PURI & SAGAR ISLANDS CLOSE TO BHITARKANIKA AND DHAMARA (ODISHA) DURING MID-NIGHT OF 24TH TO MORNING OF 25TH OCTOBER, 2024 AS A SEVERE CYCLONIC STORM WITH A WIND SPEED OF 100-110 KMPH GUSTING 120 KMPH.

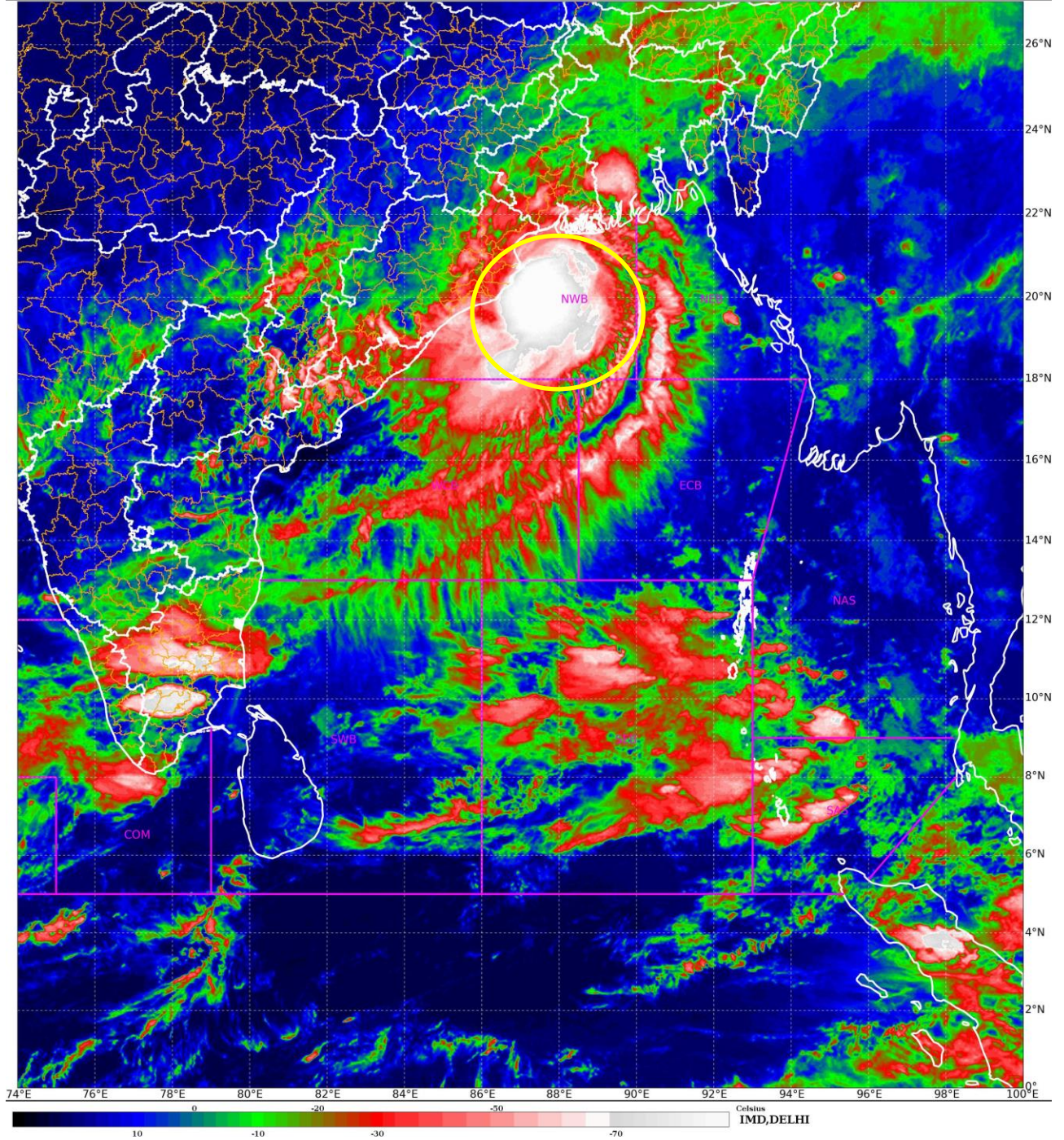
OBSERVED WEATHER:

STATION	RAINFALL (MM) (0830-2230 HRS IST)	WINDSPEED (KNOTS) AT 2230 HRS IST	STATION	RAINFALL (0830-2230 HRS IST)	WINDSPEED (KNOTS) AT 2230 HRS IST
BHUBANESWAR	15.1	8/NWLY	HALDIA	23.0	5/NELY
BALASORE	27.6	10/NELY	DIGHA	34.0	4/NELY
CHANDBALI	33.9	2/NLY	DUMDUM	8	8/NELY
PARADIP	40.6	15/W-NWLY	DIAMOND HARBOUR	17	4/ENELY
PURI	15.7	10/NNWLY			

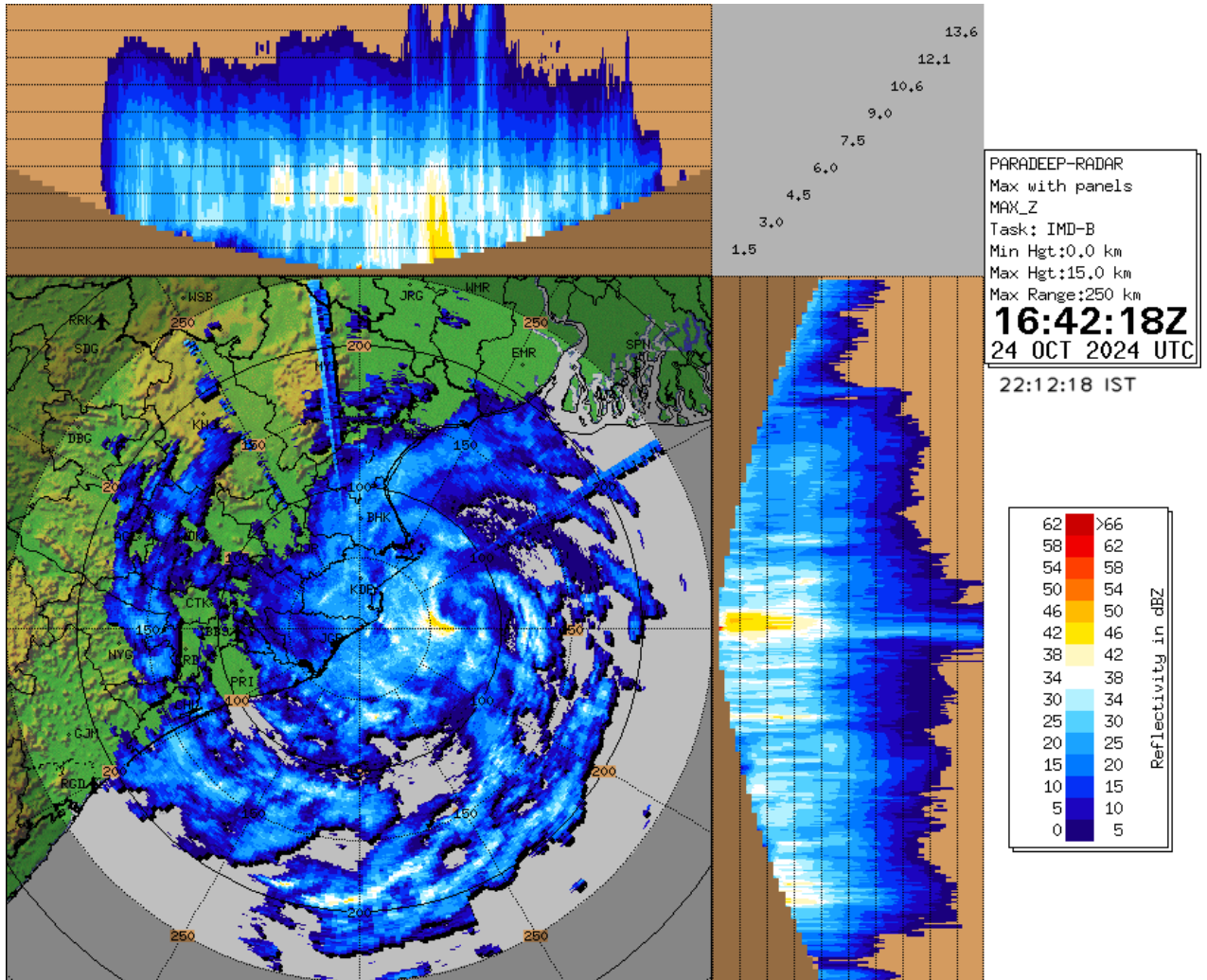
SATELLITE IMAGERY

SAT : INSAT-3DR IMG
IMG_TIR1_TEMP 10.8 um
L1C Mercator

24-10-2024/(1545 to 1612) GMT
24-10-2024/(2115 to 2142) IST

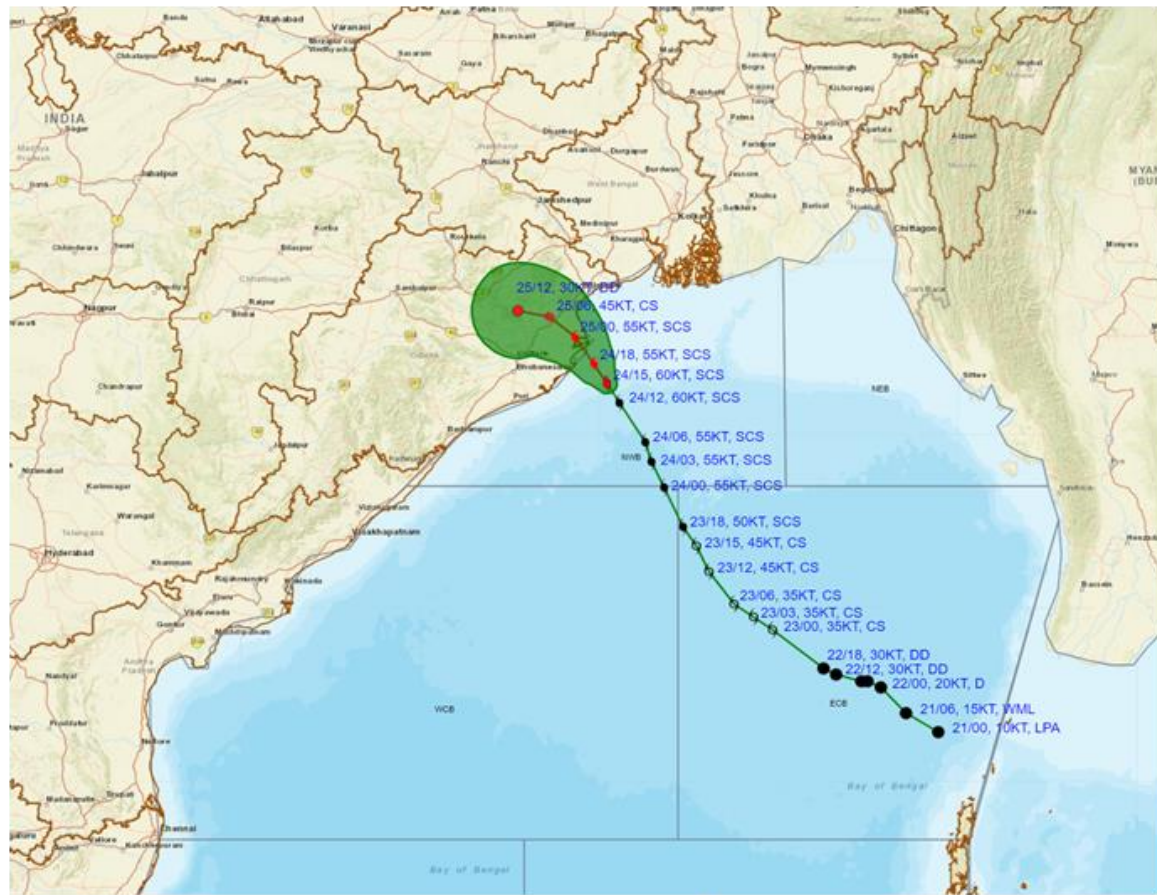


RADAR OBSERVATIONS (MAX_Z) OF DWR PARADIP





OBSERVED AND FORECAST TRACK ALONGWITH CONE OF UNCERTAINTY OF SEVERE CYCLONIC STORM 'DANA' OVER NORTHWEST BAY OF BENGAL BASED ON 1500 UTC (2030 Hrs. IST) OF 24th OCTOBER 2024



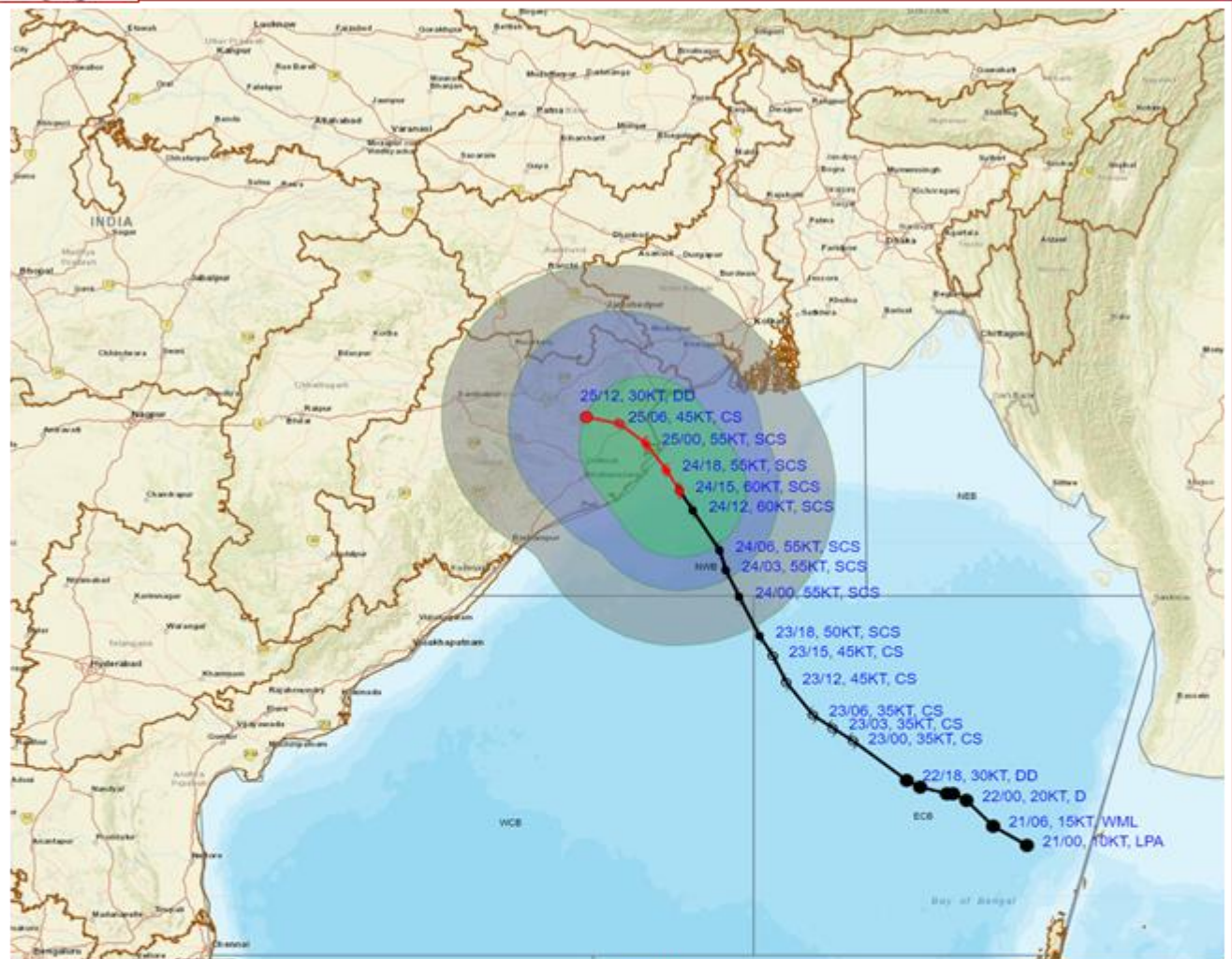
DATE/TIME : IN UTC
 IST : UTC + 0530
 KT : NAUTICAL MILE S/HOUR = 1.85 KM/HOUR
 LPA : LOW PRESSURE AREA
 WML : WELL MARKED LOW PRESSURE AREA
 D : DEPRESSION (17-27 KT)
 DD : DEEP DEPRESSION (28-33 KT)
 CS : CYCLONIC STORM (34-47 KT)
 SCS : SEVERE CYCLONIC STORM (48-63 KT)
 VSCS : VERY SEVERE CYCLONIC STORM (64-89 KT)
 ESCS : EXTREMELY SEVERE CYCLONIC STORM (90-119 KT)
 SuCS : SUPER CYCLONIC STORM (≥120 KT)

● LESS THAN 34 KT
 ○ 34-47 KT
 ○ ≥ 48 KT
 — OBSERVED TRACK
 — FORECAST TRACK
 ● CONE OF UNCERTAINTY

Forecast Date and Time (UTC)	DISTANCE (KM) AND DIRECTION FROM STATIONS		
	PARADIP (CWR)	DHAMARA	SAGAR ISLAND
24.10.24/1500	70, ESE	90, SSE	190, SSW
25.10.24/1200	130, NW	110, WNW	230, WSW



OBSERVED AND FORECAST TRACK ALONGWITH QUADRANT WIND DISTRIBUTION OF SEVERE CYCLONIC STORM 'DANA' OVER NORTHWEST BAY OF BENGAL BASED ON 1500 UTC (2030 Hrs. IST) OF 24th OCTOBER 2024



DATE/TIME : IN UTC
 IST : UTC + 0530
 KT : NAUTICAL MILE S/HOUR = 1.85 KM/HOUR
 LPA : LOW PRESSURE AREA
 WML : WELL MARKED LOW PRESSURE AREA
 D : DEPRESSION (17-27 KT)
 DD : DEEP DEPRESSION (28-33 KT)
 CS : CYCLONIC STORM (34-47 KT)
 SCS : SEVERE CYCLONIC STORM (48-63 KT)
 VSCS : VERY SEVERE CYCLONIC STORM (64-89 KT)
 ESCS : EXTREMELY SEVERE CYCLONIC STORM (90-119 KT)
 SuCS : SUPER CYCLONIC STORM (≥120 KT)

● LESS THAN 34 KT
 ○ 34-47 KT
 ● ≥ 48 KT
 — OBSERVED TRACK
 — FORECAST TRACK
 ● CONE OF UNCERTAINTY
AREA OF MAXIMUM SUSTAINED WIND SPEED:
 ■ 28-33 KT (52-61 KMPH)
 ■ 34-49 KT (62-91 KMPH)
 ■ 50-63 KT (92-117 KMPH)
 ■ ≥ 64 KT (≥118 KMPH)

IMPACT OVER THE SEA

MSW (knot/kmph)	Impact	Action
28-33 (52-61)	Very rough seas	Total suspension of fishing operations
34-49 (62-91)	High to very high seas	Total suspension of fishing operations
50-63 (92-117)	Very high seas	Total suspension of fishing operations
≥ 64 (≥118)	Phenomenal	Total suspension of fishing operations